



Northumberland East
Sixth Form Academy

2023 Prospectus

Welcome

to Northumberland East Sixth Form Academy
or NE6 for short.

Our joint sixth form brings together the best of Ashington and Bedlington Academy sixth forms and our vision is simple – to deliver excellence every day. We work hard to achieve this vision through a rigorous approach to teaching and learning, an exciting and stimulating curriculum offer and dedicated pastoral support. We believe this expertise will give you the very best opportunity for your future.

As a student at NE6 you will develop a range of skills including active citizenship opportunities, which include a wide range of activities such as sporting events,

school productions, charitable endeavours and supporting younger students.

Our sixth form is large enough to offer a rich curriculum, but small enough to ensure all students are known and cared for. We are very proud of what we have here at NE6 and the achievements of our students.

I hope you enjoy reading our prospectus and look forward to welcoming you to our school.



Toni Spoors
Executive Headteacher



Your chance to **EXCEL AT NE6**

Sixth Form is one of the most exciting stages of your education as you start to make plans and map out your future.

Here at NE6 we provide you with a stimulating environment where you can excel. For us, the sixth form is about looking ahead and we are here to help guide you as you make important decisions about the life ahead of you.

We have a very strong and supportive community at NE6 where everybody is valued as

an individual, meaning you can expect the highest level of care in every aspect of school life.

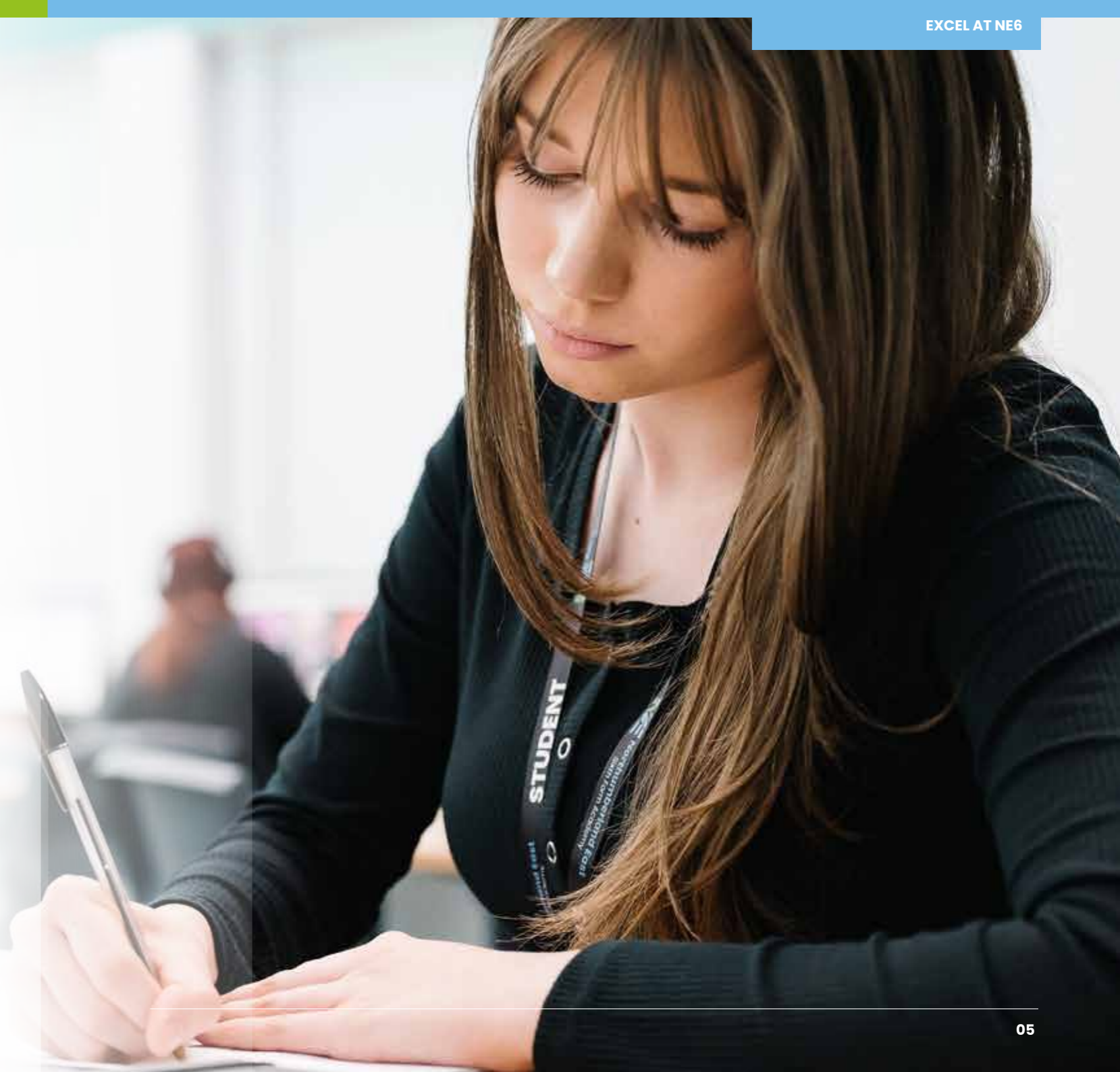
Our focus is on academic achievement, however our sixth form encourages team spirit, leadership skills, adaptability, responsibility for yourselves and others and pride in your endeavours through a range of

exciting academic and extra-curricular opportunities.

Sixth formers are encouraged to focus on their own independent learning, whilst enjoying the support of our inclusive and caring community where they play a key role as leaders and shapers of the school.

Want to know more?

Please visit ashingtonacademy.co.uk or bedlingtonacademy.co.uk



Teaching and LEARNING

At NE6 our dedicated sixth form team, led by heads of sixth form on both school sites, work hard to enable every student to reach their potential.

Small class sizes together with high quality teaching and learning ensure that there is a personal touch, which enables us to bring out the best in our students. Dedicated subject specialists enthuse our students by sharing their love of their subjects.

At the beginning of your sixth form journey you will be taught study skills that will help build confidence and independence. Sixth Form study areas mean that you can study in a purposeful environment with support staff ready to help if you require extra guidance or help with an essay or note taking.

Our dedicated pastoral team will help to ensure that you leave our sixth form with a set of skills that will set you up for life including resilience, the ability to respond to challenges and a determination to succeed.

At NE6 we will:



Set high standards and expectations



Strive to help you reach your full potential



Adapt and evolve teaching strategies to suit your needs



Give specific advice and guidance to you as an individual



Listen to you

Enabling every student to reach their potential...

Your NEXT STEPS

At NE6 we are ambitious for our students and support them to make well-informed next steps that match their talents, skills and passions in life.

At NE6 we provide university and careers coaching for all of our students. Our annual careers fair showcases the opportunities open to students from 16 to 21 years, and with over 30 employers and higher and further education providers in attendance, it is always an excellent event.

Alongside this we provide interview practise and CV writing skills workshops for students who wish to apply for apprenticeships or employment.

Students at NE6 are given the opportunity to visit at least one university with applications to the most prestigious universities supported through residential visits. These include visits to Oxford and Cambridge universities.

We provide specialist support for our medical, dentistry and veterinary school applicants, as well as bespoke mentoring for teaching and nursing applicants.

Students at NE6 can access the wider expertise that is available across the North East Learning Trust, with coaching offered to students to support their interviews and to help them secure places at their chosen institutions.

“I have had multiple opportunities to access career and university schemes which I have made use of, it has allowed me to focus on what is important for the future.”

Students are well supported by staff who share their ambitions.

FACILITIES

Students at NE6 benefit from an excellent range of facilities designed to enhance the high-quality teaching and learning on offer.

There are dedicated study areas available to give students the space they need to focus on their studies independently, as well as access to learning spaces and ICT facilities in the rest of the school.

Sixth formers studying at the Ashington site have their own dedicated cafeteria and dining space as well as two 'learning pods'.

Students at the Bedlington site can take advantage of an impressive state-of-the-art fitness suite and 3G sports pitch both during and after school.



Dedicated SUPPORT

The step up to post-16 education can be a daunting one and the subsequent stride into the 'real world' even more so.

At NE6 we have a supportive and enthusiastic team including dedicated post-16 student support officers who work hard to help you acquire the approach and attitude you'll need to tackle the transition head on (and enjoy it!).

We are in the fortunate position that our sixth form is big enough

to support a wide curriculum yet small enough to ensure students are known, valued and supported.

Self-motivation and resilience are key skills you'll need to be successful, but we are always on hand to guide you through the process of learning this with a caring and supportive attitude towards your individual needs.

AS A STUDENT AT NE6 YOU WILL BE ACTIVELY ENCOURAGED AND SUPPORTED TO TAKE RESPONSIBILITY FOR YOUR OWN DEVELOPMENT AND LEARNING.

Extracurricular OPPORTUNITIES

At NE6 you'll be given plenty of opportunity to broaden your skill set and participate in exciting and rewarding activities to help you to develop as an individual and compete at the highest levels.

These include charity activities, young enterprise challenges, access to higher education workshops, university talks, and active citizenship where you can support younger students with their studies, participate in peer reading, or help out at school

events and parents' evenings. Some of our recent sixth form charity activities include: collecting food bank donations, Macmillan Coffee Morning cake sales and quiz nights at a local care home.



National
Apprenticeship Scheme



University visits



Summer schools
with **The Sutton Trust** and the **Social Mobility Foundation**

Nuffield Placements
Every year our students have the opportunity to apply for a Nuffield Research Placement. This gives our students the chance to work alongside scientists and submit articles to scientific journals.



First aid training



Dance Academy




Work experience opportunities

Oxford and Cambridge
Sixth formers can take part in residential trips to Oxford and Cambridge universities where they can gain valuable insight into the application process and be given advice and support for interviews.



Involvement in national competitions e.g. **Bring it On Science Fair** and **UK Space Agency Competition**

Where students perform at the Newcastle Eagles basketball matches



Rewards trips



Sixth Form Prom

LEARNING IN ACTION

Five NE6 students recently headed to the UK Space Agency to take part in a *Dragons' Den* style competitive event. With the support and encouragement of NE6 staff, students formed **Team Higgs**

winning £5,000 in the national competition after developing an idea to use satellites to benefit humans.

Their idea, **Displaced Persons Aid**, focused on the aftermath

of a natural disaster where their app and website would track people who register themselves as being displaced and use GPS signals to help them find safety, support, food and supplies.



Getting OUT & ABOUT

We may inhabit a small corner of Northumberland, but our aspirations reach far further with students given opportunities to explore and experience the world around them both at home and abroad.

Recent trips have included geography fieldwork in the Lake District, a Cambridge University residential, an outing to the Newcastle Law Courts, skiing in France and even a hop across the pond to New York.

We also hope to continue visits to the Large Hadron Collider at CERN, Geneva, where students learn from the scientists working to understand the fundamental building blocks of our universe.

VISITING NEW YORK WAS AN INCREDIBLE EXPERIENCE THAT I WILL NEVER FORGET. I LOVED ITS SKYLINE, THE PEOPLE, ITS CHARACTER AND ESPECIALLY THE FOOD!

About ADMISSIONS

We welcome applications from dedicated and enthusiastic students looking to join our ambitious sixth form. The minimum entry requirements for sixth form are:

- Five grade 9 to 5 grades (or equivalent) including a 4 or better in both English language and maths.
- A GCSE grade 6 or above if you wish to study that subject at A level.
- A GCSE grade 5/Merit if you wish to study that subject as a BTEC Level 3 course.
- Where courses are new for post 16 study entry requirements will be included on the application form.

To be accepted, you must also have a proven good attendance and behaviour record.



HOW TO APPLY TO NE6:

To apply simply download the application form from our website and hand it in to reception at Ashington or Bedlington Academies.

BURSARY INFORMATION

At NE6 we have a post-16 bursary scheme, which provides financial support for eligible students who wish to study with us.

A guaranteed bursary is available to:

- young people in care and care leavers
- young people in receipt of income support
- disabled young people in receipt of both employment support allowance and disability living allowance.

A discretionary bursary is available to students who are eligible for free school meals or who may be experiencing hardship.

Please make sure you speak to a member of NE6 staff to check your eligibility for financial support.



Top 10 Reasons to STUDY AT NE6

01 We have one of the **widest ranges** of academic A levels and vocational subjects to choose from in Northumberland.

02 We offer an excellent combination of **pastoral support** and **academic guidance**.

03 You'll experience varied and **rewarding** enrichment opportunities such as going abroad or making a difference in your community.

04 We'll offer **bespoke support** for applications to university – especially harder to access institutions and courses.

05 You'll be set **challenging** and **rewarding** targets to ensure you remain **motivated in your studies**.

06 You'll become a role model for the rest of the school and **help shape the future of younger students** through various leadership opportunities like academic mentoring and peer reading.

07 You'll be given opportunities to **develop your interests** and pursue the things that make you tick.

09 You'll be learning amongst your peers in an **environment of ambition and excellence**.

08 You'll be given the chance to **become actively involved in competitive sport** as well as supporting the delivery and **coaching of sports to younger students**.

10 We'll do everything we can to support you to make a difference for your own life and other people's.

What our students SAY ABOUT NE6

The staff are very **supportive and friendly** which makes it so much easier to progress. **You can talk to the staff about anything**, personal or academic.

I have received **lots of advice for future opportunities**, such as university, apprenticeships and jobs, which has allowed me to consider which is best for me. I have been encouraged to consider all options.

NE6 offers students **a relaxed and friendly working area** where staff push you to **achieve your highest grades** and improve many of your skills.

The teachers are great when you ask for help and will take **an individual approach to helping you**. While offering mostly academic advice, sixth form staff are great with any other issues that concern you. I personally have had plenty of **advice about universities and further education**, the options available to me and any schemes I should be applying to in order to increase my chances.

I think that NE6 is a school that **helps students strive and push their limits** by completing active citizenship and work experience in order to set us up **with required skills essential for later life**.

There are **lots of resources** made available to you, the **benefit of the merged sites** being that previous experiences made only accessible to one site are now available to everyone. This means **NE6 has double the amount of opportunity**.

I was able to take part in the **Linacre Institute's highly competitive programme**, helping with my university application. Because of this support, I was able to **receive an offer from the University of Cambridge**. As well as that, post-16 staff are really supportive and will help with any problems you may have.



Supported by the North East Learning Trust

In November 2017 Ashington Academy joined the North East Learning Trust (NELT), a successful family of 12 schools across the North East, followed by Bedlington Academy in 2018.

NELT has a proven track record of school improvement with all schools under their wing having sustained or improved their Ofsted gradings at their first inspection following sponsorship.

NELT is widely regarded providing some of the best education in the county, and indeed the country, with children making significant progress from their starting points, achieving impressive exam results, and going on to access a range of well-respected further and higher education opportunities including courses at some of the UK's most elite universities.

The Trust is also heavily involved with teacher development. It boasts its very own teacher training arm, North East SCITT, that trains the next generation of teachers and ensures the highest standards of teaching are instilled from

the outset. It is a National Teaching School Hub, one of 87 centres of excellence across England that provide high quality training and development to teachers throughout their careers. Not only that, but the Trust's founding school, The Academy at Shotton Hall, is a National Research School, one of just 23 in England, that up-skill teachers using cutting-edge research.

Joining the Trust has given Hermitage Academy access to outstanding leaders who are involved in the regional and national development of education. The Trust CEO, Lesley Powell CBE, is a member of many regional and national education boards and advisory groups. The CEO and Deputy CEOs are National Leaders of Education and the Trust also employs a wide network of specialist teachers and other experienced professionals to support schools on their paths to becoming outstanding.

Our COURSES

At NE6 we offer one of the widest range of courses for sixth form students in Northumberland with around 30 courses available. Courses run subject to the required number of students enrolling, staffing provisions and exam board approval.

- | | | |
|-----------------------|----------------------------|------------------------|
| 22. Applied science | 31. English literature | 40. Photography |
| 23. Art | 32. French | 41. Physical education |
| 24. Biology | 33. Geography | 42. Physics |
| 25. Business | 34. Health and social care | 43. Product design |
| 26. Chemistry | 35. History | 44. Psychology |
| 27. Creative media | 36. Law | 45. Spanish |
| 28. Drama and theatre | 37. Maths/further maths | 46. Sport |
| 29. Economics | 38. Music | |
| 30. English language | 39. Philosophy and ethics | |

Find out more about option choices on our website:
www.ne6thform.co.uk

Applied science *BTEC*

Edexcel Level 3 Extended Certificate

The applied science sector is diverse and wide ranging. It covers topics from biomedical, forensic, physical and chemical sciences. Students experience transferable and higher order skills that are highly regarded by both higher education and employers. For example, when studying the practical scientific techniques unit, students develop laboratory skills which include carrying out an investigation and team working.

Course content

Year 1: Principles and applications of science.

Practical scientific procedures and techniques.

Year 2: Science investigation skills.

Students will also choose one optional unit from the following:

Physiology of human body systems.

Biological molecules and metabolic pathways.

Applications of inorganic chemistry.

Electrical circuits and their application.

Why study applied science?

This qualification is primarily designed to support progression to university or into apprenticeships programmes.

Assessment information

- Two externally assessed units
- Two internally assessed units

“The BTEC science course is really good because the coursework and exam both go towards the final grade. I also enjoy the practical work.”

Career Pathways

This course is for students wanting to continue their education through applied learning and who aim to progress to higher education. The qualification is equivalent to an A level and is normally taken alongside other level 3 qualifications. It will be of particular value to students wishing to maintain an element of science in a broader study programme.

Students can progress to higher education, an apprenticeship or entry level employment in the science sector. Possible future career paths include: laboratory assistant, technician, midwifery or nursing.

Art *A level*

AQA

A level art introduces you to a wide range of media and processes. This includes drawing, painting, printmaking, collage, photography, digital work, mixed media, sculpture, film and performance.

In the personal investigation and externally set exam you will examine the influences that inspired your chosen topic. Artist research and visits to relevant exhibitions and galleries are all part of reviewing, analysing and developing your personal interpretations.

Course content

Year 1: You will explore a wide range of more advanced techniques. This will take the form of workshops and sketchbook investigations. You will also carry out a personal investigation.

Year 2: You will finalise your personal investigation, which consists of a body of creative work, a 3000 word illustrated essay and a fully resolved and developed final piece.

Externally set assignment:

In February, the exam board publishes its exam paper. For the following three months you work extensively on your chosen theme, culminating in an exam over 15 hours.

Why study art?

A level art gives you the power to question, confront, explore and challenge how we think about the world. Art also develops your problem solving, communication and team working skills.

Assessment information

- Personal investigation and a 3000 word essay
- Externally set exam unit

“A level art made me realise that this was my passion; it was an amazing journey of discovery.”

Career Pathways

The creative and cultural arts industries express and reflect the importance of creativity and culture in our society. All around us artists create the world we inhabit, and contribute to a thriving and important industry which has a vast range of exciting career choices. These can include working in fine art, fashion design, graphic design, or architecture.

Students can go on to study on a range of art and design foundation and degree courses, nationally and internationally, and train in their area of specialisation.

Biology *A level*

AQA

A level biology will give you the skills to make connections and associations with all living things around you. Biology literally means the study of life and if that's not important, what is?

Course content

Year 1: Biological molecules, cells, organisms exchange substances with their environment, genetic information, variation and relationships between organisms.

Year 2: Energy transfers in and between organisms, organisms respond to changes in their internal and external environments, genetics, populations, evolution and ecosystems, the control of gene expression.

Why study biology?

In A level biology you will learn about a wide range of biological concepts and techniques including the biochemistry of photosynthesis and respiration, the theory of DNA replication

and the study of health and diseases.

You will explore how biology influences and contributes to the success of the economy and society. You will also enjoy good opportunities for practical laboratory experimental work.

Assessment information

100% exam.

“Biology is my favourite A level. I have learnt a huge amount about life and how it works, and I really enjoyed extracting my own DNA.”

Career Pathways

A biology A level can lead to so many different careers including:

- Doctor
- Clinical molecular geneticist
- Nature conservation officer
- Pharmacologist
- Research scientist
- Vet
- Secondary school teacher
- Marine biologist
- Dentist.

Business *BTEC*

Edexcel Level 3 Extended Certificate

BTEC business gives good opportunities to develop employability skills, relevant to the world of work or for going on to higher education, such as the ability to negotiate, influence, think critically and develop resilience.

Students will prepare and present presentations and will work and lead in group situations. All students will develop analytical and creative skills to solve problems and evaluate outcomes, using systems and technology where appropriate.

Course content

Year 1: Exploring business (internally assessed).

Developing a marketing campaign (externally assessed).

Year 2: Personal and business finance (externally assessed at the end of Year 13).

Recruitment and selection (internally assessed).

Why study business?

This course is equivalent to one A level. It is for students who are interested in learning about the sector alongside other fields of study, with a view to progressing to a wide range of higher education courses, not necessarily just in business.

Assessment information

- Internally assessed units
- Externally assessed units

“BTEC business will help me make informed decisions in the future if I run a business. I will be able to do my own accounts.”

Career Pathways

There are many different career paths for those who wish to work within the business sector. These include management, HR, finance, marketing and business information management, with the opportunity to work both in the UK and internationally.

This qualification carries UCAS points. It can lead to a number of higher educational choices including; marketing, finance and accounting, international business and human resource management.

Chemistry *A level*

AQA

A level chemistry attempts to answer the big question 'what is the world made of?' The search for this answer makes chemistry so fascinating. From investigating how one substance can be changed into another, to researching a new wonder drug to save millions of lives, the opportunities that chemistry provides are endless.

Students cover content in organic, physical and inorganic chemistry, building directly on the content learned at GCSE.

Course content

Year 1: Atomic structure, amount of substance, bonding, energetics, kinetics, chemical equilibria and Chatelier's principle, periodicity, group two the alkaline earth metals, group seven (17) the halogens, introduction to organic chemistry, alkanes, halogenoalkanes, alkenes, alcohols, organic analysis.

Year 2: Thermodynamics, rate equations, the equilibrium constant K_p units, electrode potentials, acids and bases and electrochemical cells,

properties of period three elements and their oxides, transition metals, reactions of ions in aqueous solution. Optical isomerism, aldehydes and ketones, carboxylic acids and derivatives, aromatic chemistry, amines, polymers, amino acids, proteins and DNA, organic synthesis, NMR spectroscopy, chromatography.

Why study chemistry?

Chemistry helps you in developing research, problem solving, mathematical and analytical skills. It requires the development of logical working and step-by-step reasoning. It is sometimes referred to as the central science subject, due to the way it links and overlaps with biology and physics.

Assessment information

100% exam.

"I enjoy chemistry more than I thought I would - I find it to be a good challenge. I understand it will benefit me greatly in my future."

Career Pathways

A chemistry A level can lead to so many different careers including:

- analytical chemist
- chemical engineer
- clinical biochemist
- pharmacologist
- doctor
- research scientist
- toxicologist
- environmental consultant
- patent attorney
- science writer

The top five degree courses taken by students who have an A level in chemistry are:

- chemistry
- biology
- pre-clinical medicine
- mathematics
- pharmacology

Creative media *BTEC*

Edexcel Level 3 Extended Certificate

This course is designed to develop an understanding of the media industry through analysing media representations and pitching and producing media projects.

Students gain a broad understanding of the subject and learn the skills to produce media artefacts. They develop their ability to analyse and deconstruct media images and representations and will learn the communication and planning skills needed to work in teams through vocational media projects.

Course content

Year 1: Pre-production portfolio - Students study the requirements of planning and delivering a digital media product.

Website production - Students will be introduced to the fundamental technologies, principles and practices that underpin contemporary website production. Students will then create their own website.

Year 2: Media representations - Students will consider how different media representations are constructed by media

producers to create meaning, messages and values.

Responding to a commission - Students consider the commissioning process and how media producers respond to clients.

Why study media?

The course offers interesting and engaging areas of study within different media sectors as well as the technical skills required to be able to effectively analyse media products, theories and how media is represented.

Assessment information

Internal coursework and external exam.

"Creative media deepened my understanding of theories, products and the media sector. The help and support provided me with skills such as effective writing, research, analytical skills and creative development."

Career Pathways

This course develops a number of skills which can be used in many workplaces. Skills include:

- cognitive and problem solving skills, critical thinking and how to use systems and technology
- intrapersonal skills, communicating, working collaboratively, negotiating and influencing, self-presentation
- interpersonal skills, self-management, adaptability and resilience, self-monitoring and development.

These skills can lead to careers in: web design, photography, graphic design, gaming, media studies and more.

Drama and theatre *A level*

Educas

This stimulating and engaging course encourages learners to make connections between dramatic theory and their own practice and is designed to promote a balance between practical theatre making and the theoretical understanding of drama and theatre. In addition to their own theatre making, students also develop knowledge and understanding of the role of the director and participate in live theatre as an audience member.

Course content

Component 1: Theatre workshop - One reinterpretation of an extract, using working methods and techniques of either an influential theatre practitioner or a recognised theatre company.

Component 2: Text in action - A second devised piece plus one extract, in a different style, from the devised performance.

Component 3: Text in performance - Two complete performance texts from different historical periods and one extract from a third contrasting text.

Why study drama?

Explore your creative and artistic abilities, whilst developing a better understanding of yourself and the world that we live in. Through the nature of the course, you will build on self-discipline, confidence and teamwork and learn how to interpret, research and problem solve, resulting in confidence with decision making.

You will also see a wide range of theatre. Recently students have visited Broadway and the West End. Also, we have previously worked on programmes such as the National Theatre Connections, which offers fantastic opportunities for students to be able to access professional environments and learn from people currently working in the field.

Assessment information

Internal and external assessments.

“Drama is excellent for future careers, it builds leadership.”

Career Pathways

This specification provides a suitable foundation for the study of drama and theatre or a related area through a range of higher education courses, progression to the next level of vocational qualifications or employment in and outside of the performing arts industry.

In addition, the specification provides a coherent, satisfying and worthwhile course of study for students who do not progress to further study in this subject. Recent graduates have gone on to study a range of courses at university such as teaching, agriculture and history.

Economics *A level*

Edexcel

Economics is about choice and the impact of our choices on each other. It relates to every aspect of our life, from the decisions we make as individuals or families to the structures created by governments and firms. An economic way of thinking can help you make better choices.

You will find this course interesting if you enjoy debating economic issues such as inequality, globalisation and the global financial crisis. You will explore and present alternative courses of action whilst keeping up to date with national and international trends and learning about the economic environment and business through research and investigation.

Course content

In theme 1 and theme 2 you will be introduced to the nature of economics, how markets work and why they fail, consumer choices and enterprise in the economy. You will also consider the role of banks and life in a global economy.

In theme 3 and theme 4 you will explore the impact of globalisation on consumers, firms and the labour market. You will also investigate the role of the government and have an opportunity to consider the role and impact of the financial sector.

Why study economics?

Studying economics will help you develop transferable skills that will prepare you for studying at university or moving into the world of work. These include skills in data interpretation and essay writing. You will also develop commercial awareness.

Assessment information

100% exam.

“Economics will be very beneficial for the future as it covers a huge scope of jobs and areas of study. It will support me no matter what I choose to do.”

Career Pathways

Economics students can follow a wide range of careers in industry, commerce, finance and the civil service. You might choose a career in banking, sales, product management or general management.

Suitable higher education courses include economics degrees or degrees in applied economics such as environmental economics, labour economics, public sector economics or monetary economics. You might choose to study business economics, international business or a business and management degree.

English language *A level*

AQA

English language includes opportunities to develop creative writing skills whilst investigating why certain features of language exist.

The content covered is a relevant and up-to-date reflection of contemporary language study.

With text and data-based sources of language, you will study English in its various forms and contexts, with the concepts and methods appropriate for the analysis of language. These key skills will underpin all elements of the course.

Course content

Across the two years, students will:

- study a wide range of texts and learn to identify the ways in which text can be presented to appeal to a particular audience or serve a particular purpose
- learn about how gender affects language, how where you are from affects language and how power in the workplace affects the vocabulary we might use

- learn how to represent ideas within a text for a specific purpose and develop editorial skills
- learn about child language development and language change over time.

Why study English language?

If you are interested in analysing the way English works and how it is used in the world, in deconstructing texts, as well as creating your own, then this is the course for you.

Assessment information

80% exam 20% coursework.

“Choosing English at A level has given me a fascinating insight into how language is used in a variety of contexts, which will benefit me in my future career path.”

Career Pathways

There is little doubt that the versatility of the final qualification, and importance placed on language skills in the market place, make this a sound choice for entry into a wide range of different careers.

The qualification is well regarded by universities and is useful for anyone contemplating a career which involves dealing with the public.

English language is a valuable A level to have if you want to work in journalism, the media, law, teaching or social work, to name but a few.

English literature *A level*

AQA

The English literature course encourages the exploration of texts in a number of different ways including:

- a literary theme over time
- the study of literature through engaging with two of the main historicist perspectives, the diachronic (reading texts written across widely different time periods that explore the same theme) and synchronic (reading texts written within a narrower and clearly defined time period)
- the study of various texts, both singly and comparatively, chosen from a list of core set texts and a list of chosen comparative set texts
- writing about texts in a number of different ways.

Course content

Year 1: *Othello*, *Wuthering Heights*, *Frankenstein* and the Anthology of Poetry.

Year 2: A selection of 20th century literature and poetry.

Why study English literature?

English literature will teach you to appreciate the written word in all its forms and give you a greater understanding of classic texts. Additionally, it will allow you to broaden your cultural and academic understanding of canonised texts and writers, meaning you have a breadth of literary knowledge. The school-based assessment task allows for an element of independent, student-led exploration of texts, preparing students for the independence of university study, as well as the skills for academic writing.

Assessment information

80% exam 20% coursework.

“English literature enables me to amplify my creativity by reliving the lives of tragic heroes. It provides me with an insight of societal values throughout history and how this has an impact.”

Career Pathways

English literature can lead to a number of exciting careers such as teaching, journalism, advertising, copy writing, PR and more.

The qualification is well regarded by universities and is useful for anyone contemplating a career which involves dealing with the public.

This course could lead to a number of university courses including: English, creative writing, journalism, government and politics and other arts related courses.

French *A level*

Edexcel

Do you enjoy being able to understand and be understood in a foreign language? Do you like deciphering the meaning of new words and expressions? Are you excited by the idea of travelling across the world and living abroad or using your skills in an international forum? Yes? Then the study of a language at A level is the choice for you.

Course content

Year 1: Students will study two themes. Throughout the topics, key grammatical points and cultural topics will be explored.

Year 2: Students will study the third and fourth themes and will begin the study of a contemporary French film. In the second year of study, students will also choose their topic for the independent research project which forms part of the final speaking examination.

Why study French?

An A level French qualification will give you a deep-seated understanding of not only this language, but also of your own. It is the springboard to

learning further languages in the future and is the ideal accompaniment to any other A level course of study. An A level French qualification will help you to experience the world from different perspectives and appreciate diverse cultures.

Assessment information

70% exam 30% internal speaking exam.

“My French teachers are really supportive and it’s really interesting to learn about a different language and culture. To be bilingual in today’s society sets you apart from others and it gives you the chance to connect with lots of different people in the future.”

Career Pathways

As a living, breathing, evolving subject, a languages qualification can aid you in any chosen career. It shows that you are versatile, confident, able to manipulate language to a high degree and have excellent problem solving skills. Former students of languages have secured positions in journalism, the car industry, teaching, translation and in scientific fields. Many of our students have gone on to live permanently abroad and have expanded their fluency in language to more than one.

Evidently, aside from a languages degree, students have gone on to study medicine, chemistry, history and human resources.

Geography *A level*

Edexcel

Studying geography at A level provides students with an opportunity to deepen their understanding of the socio-economic and environmental world in which they live.

Studying tectonic processes and hazards along with coastal processes, the water and carbon cycles allows students to understand how planet Earth works. An in-depth investigation of contemporary issues such as the impact of superpowers and emerging superpowers on the global economy, global politics and the environment equips students with the knowledge and skills necessary to make sense of their own fast changing world.

Course content

In Year 1 students will study:

- tectonic hazards
- coastal landscapes and change
- globalisation
- regenerating places

In Year 2 students will study:

- the water cycle and water insecurity

- the carbon cycle and energy security
- superpowers
- global development and connections

Students will also undertake four days of fieldwork.

Why study geography?

Geography spans the divide between arts and science disciplines complementing the study of a wide range of subjects. As a facilitating subject it can be taken to complement any combination of A levels.

Assessment information

80% exam 20% coursework.

“I chose to study geography at A level because it gives me an insight into the reasons behind important world events. I also receive a lot of support from the geography staff who are extremely helpful.”

Career Pathways

Geography is considered an appropriate A level for many degree courses as it has both a science and arts element to it. It can be taken to complement any combination of A levels.

Geography has been known to lead to a number of careers including teaching, town planning, environmental sciences, meteorology, marketing, business, law, leisure and tourism and architecture.

Health and social care *BTEC*

Edexcel Level 3 Extended Certificate

This course investigates why and how people grow and develop and the different types of care available to meet all of their needs and how they can access these successfully.

Course content

Year 1: Human lifespan development - You will learn about human growth and development, theories and models to explain behaviour and the interaction between the physical and psychological factors of the ageing process.

Working in health and social care - You will investigate the range of roles of people who work in health and social care settings and learn about the organisations that provide services in care settings.

Year 2: Meeting individual care and support needs - You will create a portfolio of evidence to demonstrate your knowledge of the values and principles of meeting care and support needs and ethical issues that arise when personalising care.

Psychological perspectives - You will create a portfolio of evidence

to demonstrate your knowledge of different psychological perspectives and how these approaches have formed the basis of different techniques and therapeutic practices to manage behaviours.

Why study health and social care?

The health and social care course will give you an introduction to the biggest employment sector in the UK. The course covers a range of traditional and contemporary issues that influence the way we develop and the care we receive to meet our needs. There are good opportunities for critical thinking, studying a course that develops your analytical and evaluative skills.

Assessment information

- Internally assessed units
- Externally assessed units

“I love the fact that this subject is very varied. This course opens up many doors in all health and social care sectors.”

Career Pathways

This course brings together knowledge and understanding with practical and technical skills, through vocational tasks that encourage the development of behaviours and transferable skills. These are valued in both higher education and the workplace in a wide range of health and social care sectors such as: nursing, childcare, social work, teaching, mental health, paramedic, counselling, health visiting.

BTEC health and social care is designed to combine the technical and academic skills to allow you to become the highly skilled, work-ready individual that employers and universities in the health and social care sector look for.

History *A level*

The A level history course explores key themes of building a nation state, democracy and protest.

Course content

Year 1

The Early Stuarts and the Origins of the Civil War 1603–1660

Students will cover the Early Stuarts 1603–1646 followed by the enquiry topic: The Execution of Charles I and the Interregnum 1646–1660. (50 marks/25% of the total A' Level)

The Cold War in Europe 1941–1995

Students will cover origins of the Cold War to 1945, development of the Cold War 1946–1955, Cold War 1956–1984 and end of the Cold War 1984–1995. (30 marks/15% of the total A' Level)

Year 2

Civil Rights in the USA 1865–1992

A thematic unit, students cover a period of over 100 years that focuses on the struggle of citizens in the United States to

gain equality before the law. (80 marks/40% of the total A' Level)

Coursework - independently researched assignment. (40 marks/20% of the total A-level)

Why study history?

The course will appeal to those students who are curious about the past and the world we live in. History does not simply teach you about the past but it also provokes you to think about how to shape the future. You will learn how to think critically and analytically about the past.

Assessment information

80% exam 20% coursework.

“History A level has enabled me to develop my investigative skills and makes me ask more questions about the world around me. I am much more analytical and critical.”

Career

While some people use history directly in teaching, lecturing, library and museum work, most do not. The skills developed studying history are in demand in a very wide variety of careers.

If students wish to go onto university, they could study:

- law
- teaching
- banking
- journalism
- media work
- personnel work

Law *A level*

AQA

Do you enjoy finding out about how and why legal cases are decided and how laws are made?

You will learn about negligence and how to take a case to court. You will discover the legal requirements to find guilt in different crimes, including murder, manslaughter, theft and robbery and you will also gain an understanding of the prosecution and defence viewpoints and where the burden of proof lies in a trial.

Course content

You will learn about English legal systems, statute and common law and the operation of the civil and criminal justice system. You will cover the substantive criminal laws of murder, manslaughter and non-fatal offences. You will also cover different property offences including theft and robbery. Finally, you will gain an insight into the rules relating to contract law which impact upon us all.

Year 1: Statute creation and law reform, delegated legislation, statutory interpretation, the civil and criminal process,

access to justice for claimants and defendants, negligence, murder, manslaughter, theft and robbery, defences to crime, judicial precedent, elements of crime, non-fatal offences and sentencing.

Year 2: Law and its relationship with morality, justice and fault, occupiers' liability, compensation, nuisance, vicarious liability and contract law.

Why study law?

This is the course for you if you want to understand the role of law in society and improve your awareness of the rights and responsibilities of individuals. By learning about legal rules and how and why they apply to everyday life, you will develop your ability to reason and to construct arguments.

Assessment information

100% exam.

"I find it really eye-opening! Studying law is intellectually stimulating."

Career Pathways

By learning about legal rules and how and why they apply to real life, students develop their analytical ability, decision making, critical thinking and problem-solving skills. All these skills are highly sought after by higher education and employers.

A level law will also provide an excellent foundation for those students who are interested in a legal career or profession, as well as students interested in working in the criminal justice system.

Students could go onto university to study: law, government and politics, business and criminology.

Maths and further maths *A level*

Edexcel

Maths is a key subject at A level, and several of its components will appear in other A level subjects. A level biology, chemistry, physics, psychology and economics include mathematical processes related to statistics, mechanics and other numerical skills, making it a great course to accompany any of those subjects.

Further maths at A level will be available to interested students who have achieved at least Grade 7 at GCSE mathematics.

Course content

There are three different strands to A level maths:

Core (pure) maths, which focuses on the algebraic manipulation of expressions and equations, and graphs. This takes up the largest share of the course (68%).

Statistics, which focuses on the manipulation and presentation of data (16%).

Mechanics, closely linked to A level physics, where we look at models of displacement, velocity

and acceleration as well as the forces which act upon an object (16%).

Why study maths?

A level maths is an excellent course to have on your CV if you want to continue onto university, or even if you wish to find employment straight after sixth form.

Assessment information

100% exam.

"Although A level maths can be tough, with practice, it becomes clearer and more enjoyable. I especially enjoy learning new skills such as differentiation."

Career Pathways

A level maths is a core skill which helps provide a gateway to many science based careers. The qualification is an essential to so many university courses and is often required in so many different occupations.

After completing an A level in maths, students could go on to study the following subjects at university: mathematics, physics, chemistry, biology, medicine, veterinary science, accountancy, economics and more.

Rys. 2) Histogramy przedstawiające z polskich hut w ramach zakładu zebraanych EPSTAL o średnicach:
a) R_1 – granica plastyczności tlenku
b) R_m – wytrzymałość na rozciąganie
c) A_p – wydłużenie przy maksymalnym

Music *A level*

Eduqas

A level music is a rigorous, academic subject which allows you to develop your passion for performing and composing whilst introducing you to traditional and new styles of music. It allows you to develop your creativity and self-expression alongside analytical skills.

This course is for you if you enjoy actively engaging in the process of music study, want to broaden your musical experience and interests and develop your awareness of musical technologies.

Course content

In the performing component you will perform a minimum of three pieces - at least one of the pieces must be as a soloist. The other pieces may be either as a soloist or as part of an ensemble.

The composing component of the course requires three compositions, one of which must reflect the musical techniques and conventions associated with the western classical tradition

in response to a brief set by the exam board.

In the appraising component, music from the western classical tradition is studied alongside rock and pop, musical theatre, jazz, twentieth and twenty first century music.

Why study music?

The course is designed to allow you to pursue your own musical interests whilst having the flexibility to specialise in either performing or composing. You are able to engage with the diverse heritage of music across a wide range of traditions, genres and styles.

Assessment information

- Internal assessment
- External assessment

“Music is like an escape from reality, it gives me a chance to express my feelings in a way that couldn't be said with words.”

Career Pathways

The varied nature of the course enables students to develop highly desirable skills in areas such as self-management, creativity, data analysis, performance, teamwork, problem-solving, and communication, all of which makes them an attractive prospect for potential employers. Other popular destinations for music graduates include broadcasting, publishing, law, politics and the Civil Service. Rather than limiting your career prospects, a music degree opens doors to a wide range of careers.

Suitable higher education courses include music degrees, education degrees or dual award degrees including music and business management, music and law.

Philosophy and ethics *A level*

OCR

This is an incredibly diverse course that aims to develop students' skills through an in-depth study of traditional philosophical thoughts and ethical theories.

Philosophy and ethics lessons are incredibly diverse, with lively debates, studying philosophers' original writings and analysing, assessing and evaluating key ideas.

Course content

In the philosophy of religion unit, students begin by studying the ancient Greek philosophers, before working through many years of philosophical thought in an attempt to answer key questions including 'what is reality?', 'does God exist?', 'what happens when we die?' and 'do humans really have a soul?'

Students look, in depth, at religious experiences including miracles, analysing whether or not people can really experience God in their everyday lives.

In ethics, students will study different ethical theories including utilitarianism and

Kantian ethics and consider how we know the difference between right and wrong, whether we can say definitely that an action is either right or wrong and debate whether we are influenced by pleasure and/or pain.

Students will apply ethical theories to modern life issues. In Year 13, students will look in depth at the language of ethics and the role of conscience in decision making.

Why study philosophy and ethics?

Philosophy and ethics develop your analytical and debating skills. If you enjoy thinking deeply about issues you will enjoy this course.

Assessment information

100% exam.

“I love the opportunities for sharing ideas, discussion and debate. We learn to respect other opinions while defending our own point of view.”

Career Pathways

A qualification in philosophy and ethics is recognised by colleges, universities and employers. It demonstrates your ability to think independently and as part of a team.

Philosophy and ethics also shows your ability to communicate clearly, whether this is verbally, written or using ICT for presentations.

Possible careers include: law, police, journalism, most forms of management including personnel, human resources, teaching and armed forces.

Photography *A level*

AQA

A level photography explores images, artefacts and resources from past and recent times including European and non-European examples. Your work will be demonstrated through practical and critical activities demonstrating a range of styles, genres and traditions.

Course content

Year 1: You will explore a wide range of more advanced techniques based on ideas, issues, concepts and themes leading to a finished outcome. Practical elements should make connections with some aspect of contemporary or past practice of artists.

Year 2: You will finalise your personal investigation which consists of a body of creative work, a 3000 word illustrated essay and a fully resolved and developed final piece.

Why study photography?

The course offers the opportunity to explore your creative and artistic abilities working through areas

of photography including portraiture, landscape, still life, documentary, photojournalism, fashion photography, experimental imagery, multimedia and photographic installation.

NE6 offers state of the art facilities where students are able to access a range of purpose-built spaces including a professional darkroom and digital editing computer suite.

Course content is delivered by specialist staff who have extended experience of working within a range of creative industries.

Assessment information

40% exam 60% portfolio.

“Photography has really helped me to express my creativity through trying and testing the different techniques available - I love watching my photos develop in the darkroom.”

Career Pathways

This specification provides a suitable foundation for the study of professional photography or a related area including graphic design through a range of higher education courses, progression to the next level of vocational qualifications or employment in and outside of the industry.

Career options include professional photographer, graphic designer, marketing and promotion and photo journalist.

Physical education *A level*

OCR

PE allows students to study physical education in an academic setting, enabling them to critically analyse and evaluate their physical performance and apply their experience of practical activity in developing their knowledge and understanding of the subject.

Students will learn about physiological, psychological and socio-cultural factors that influence performance in sport and physical activity.

Course content

Year 1: Theoretical knowledge of physiological and psychological factors which affect performance. Students will also be expected to refine their ability to perform effectively in physical activity by independently developing skills, techniques and tactics within their selected sport.

Year 2: Physiological and psychological factors, key socio-cultural factors that influence involvement in physical activity and sport. Students will also be expected to continue to refine their ability to perform effectively in physical activity by

independently developing skills, techniques and tactics within their selected sport. Students will also be assessed observing and analysing a performer in their chosen sport.

Why study PE?

If GCSE PE sparked your interest in the anatomy and physiology and the impact psychology has on sports performance then A level PE is the course for you. A level PE takes the learning experience to the next level providing the opportunity to deepen understanding.

Assessment information

70% exam 30% coursework.

“PE has opened my eyes to the amount that sport is involved in everyday life. We explore many interesting topics like biomechanics, joints and muscles of the body and even the history of sport.”

Career Pathways

This specification will create confident, independent thinkers and effective decision makers who can operate effectively as individuals or as part of a team – all skills that will enable them to stand out and effectively promote themselves as they progress through life.

This course will prepare learners for the further study of PE or sports science courses as well as other related subject areas such as psychology, sociology and biology. Learners will also develop the transferable skills that are in demand by further education, higher education and employers in all sectors of industry.

Physics *A level*

AQA

Physicists explore the fundamental nature of almost everything that we know about. They probe the furthest reaches of the earth to study the smallest pieces of matter. Join them to enter a world deep beneath the surface of the normal human experience.

Course content

Year 1: Measurements and their errors, particles and radiation, waves, mechanics, energy and electricity.

Year 2: Further mechanics and thermal physics, fields and nuclear physics.

One option from the following; astrophysics, medical physics, engineering physics, turning points in physics and electronics.

Why study physics?

Physics will enable you to develop your problem solving and mathematical skills, as well as encouraging you to be analytical in your practical work. We will develop your ability to work as part of a team and your communication skills.

Assessment information

100% exam.

“Physics is a fantastic subject with fun theory that has made my enjoyment of science grow.”

Career Pathways

The skills developed on this course will enable you to go on and study a wide variety of courses at university, as well as aid you in your future career.

Careers include: geophysicist/field seismologist, healthcare scientist, medical physics, higher education lecturer, radiation protection practitioner, research scientist (physical sciences), scientific laboratory technician, secondary school teacher, meteorologist, structural engineer, acoustic engineer, product/process development scientist, systems developer, technical author, pilot or aerospace engineer.

Product Design *A level*

AQA

During this course, students will investigate historical, social, cultural, environmental and economic influences on design and technology, whilst enjoying opportunities to put their learning into practice by producing prototypes of their choice.

Students will gain a real understanding of what it means to be a designer, alongside the knowledge and skills sought by higher education and employers.

Course content

Students are given topics or areas to investigate which will develop their design and practical skills. Year 12 project themes include: pewter cast jewellery, 3D printed design, cast concrete interior design and contemporary lighting.

In Year 13 students will choose a project theme that interests them. Previous projects have included: creating furniture, musical instruments, architectural models, sports equipment, children's play furniture and objects involving mechanical engineering.

There are also theory lessons on materials and manufacturing, use of computer systems in industry, famous designers and their products, and environmental design.

Why study product design?

Product design is designed to support students in their progression to careers and higher education in the creative and engineering sectors.

Key areas developed include research and analytical skills, creativity, time management, graphic design skills, technical knowledge - including CAD/CAM, practical skills and problem solving. It also teaches students the benefits of both an independent and collaborative approach to design.

Assessment information

Exam 1 – 30% - Technical Principles

Exam 2 – 20% - Designing and making principles

NEA – 50% - Substantial design and make project

Career Pathways

Students can progress to higher education, an apprenticeship or entry level employment in the creative and engineering sectors.

Possible future career paths include: Architecture, engineering, product design, graphic design, interior design, fashion design, CAD technician and robotics.

“I enjoy the challenge of solving real world problems. I like to see my designs develop and I enjoy seeing the outcomes when they are successful.”

Psychology *A level*

AQA

This A level course will enable you to gain an understanding of people and their motivation. You will engage with real world issues, applying your psychological knowledge and skills to case studies and experiments.

Psychology is a science so there is a focus on brain structures, neurochemicals and other physiological factors that impact an individual's behaviour. You will also carry out and analyse experiments, using a range of inferential statistics.

Course content

Year 1: Introductory topics in psychology.

Psychology in context.

Year 2: Issues and options in psychology.

Why study psychology?

Students will grow as independent thinkers and informed and ethically-minded citizens, who understand the role and importance of psychology as one of the key disciplines relevant to understanding how to cope with the fast paced society we live in today.

Assessment information

100% exam.

“Some topics are really eye opening as you realise that not everyone in the world is brought up or cared for in the same way.”

Career Pathways

This will benefit anyone who wants to work with people: police, social workers, counsellors, teachers, medical careers.

It is also beneficial for analytical careers such as statisticians, mathematicians or business related careers.

As an A level that covers a diverse range of topics, it lends itself to many degree disciplines. At university, students could go on to study: psychology, biomedical sciences, business, human resource management, marketing, forensic psychology.

Spanish *A level*

Edexcel

Are you enthused by being able to understand and be understood in a foreign language? Do you enjoy deciphering the meaning of new words and expressions, are you excited by the idea of travelling across the world and living abroad and using your skills in an international forum? Then the study of a language at A level is the choice for you.

You will continue to build upon the skills already learnt at GCSE, but will further be able to deconstruct language, understand the rules that govern the subject and enjoy learning about the social, political and artistic aspects of the current Hispanic world.

Course content

Year 1: Students will study two themes. Throughout the topics, key grammatical points and cultural topics will be explored.

Year 2: Students will study the third and fourth themes and will begin the study of a contemporary Spanish film. In the second year of study, students will also choose their

topic for the independent research project which forms part of the final speaking exam.

Why study Spanish?

An A level Spanish qualification will give you a deep-seated understanding of not only this language, but also of your own. It is the springboard to learning further languages in the future and is the ideal accompaniment to any other A level course of study. An A level Spanish qualification will help you to experience the world from different perspectives and appreciate diverse cultures.

Assessment information

70% exam 30% speaking exam.

“Studying A level Spanish has helped me perfect my communication skills which has helped across all of my studies. I was able to explore my own interests through my independent research project and express myself as I wish in the target language. I feel this is a real achievement.”

Career Pathways

As a living, breathing, evolving subject, a languages qualification can aid you in any chosen career. It shows that you are versatile, confident, able to manipulate language to a high degree and have excellent problem solving skills. Former students of languages have secured positions in journalism, the car industry, teaching, translation and in scientific fields. Many of our students have gone on to live permanently abroad and have expanded their fluency in language to more than one.

Evidently, aside from a languages degree, students have gone on to study medicine, chemistry, history and human resources.

Sport *BTEC*

Edexcel Level 3 Extended Certificate

This qualification is designed to support progression to higher education when taken as part of a programme of study that includes other appropriate BTEC Nationals or A levels.

Course content

Students will study three mandatory units:

- Anatomy and physiology.
- Fitness training and programming for health, sport and well-being.
- Professional development in the sports industry.

Students will also choose one optional unit.

Why study sport?

This is the ideal course for students who want to continue their education through applied learning and who aim to progress to higher education and ultimately to employment in the sport sector.

Assessment information

- Two externally assessed units
- Two internally assessed units

“As a result of studying sport, I now have a terrific insight into how to apply for a job in the sports industry and the interview process also gave me a boost of confidence when interviewing for my university place.”

Career Pathways

BTEC sport develops knowledge, understanding, skills and attributes required in the sports sector. Skills include but are not limited to:

- cognitive and problem-solving skills
- intrapersonal skills
- interpersonal skills.

Students could go onto university to study:

Sport studies and business, sport psychology, sports education and special and inclusive education or sport and exercise science.